




# 14th Annual WA MAJOR PROJECTS CONFERENCE 2025


**19-20 March 2025**  
Perth Convention & Exhibition Centre  
Perth, WA

 [waconference.com.au](http://waconference.com.au)

## Conference Agenda

### Day 1 - WEDNESDAY 19TH MARCH

 **08:00 - 08:50**  
REGISTRATION

 **08:50 - 09:00**  
MC OPENS

 **09:00 - 09:30**

#### Speed Networking

Introduce yourself, swap business cards, and form new and lasting business connections during a series of one-on-one exchanges with fellow conference delegates.

 **09:30 - 09:50**

#### Major Projects by Development WA

- Residential housing within the State.
- Redevelopment Areas.
- Industrial Land Authority Projects.



Lorissa Kelly, Executive GM Strategy, Engagement and Business Development, DevelopmentWA

 **09:50 - 10:10**

#### Building WA's Health Infrastructure Projects and Programs

- Hear the views of medical community on the state of Western Australia's health infrastructure, the planning pipeline for development including major ICT projects and the New Women and Babies Hospital, and future directions in healthcare delivery and infrastructure.



Dr. Michael Page, President, Australian Medical Association (WA)

🕒 10:10 - 10:30

### Major Projects at the City of Perth



- Overview of major projects in and around the city of Perth
- Russell Square Revitalisation, East Perth community sport and recreation hub
- Securing Perth's future as a world-class city

Michelle Reynolds, Chief Executive Officer, City of Perth

---

🕒 10:30 - 11:00

### Westport Program



- Westport is the State Government's planning program to move container trade from Fremantle to Kwinana. This includes planning new port facilities, a connected road and rail freight system, and logistics operations.
- Westport is collaborating with industry and drawing on their experience and knowledge to ensure the new port facilities are fit for purpose and can adapt to future growth.

Patrick Seares, Managing Director, Westport

---

🕒 11:00 - 11:30  
MORNING TEA

🕒 11:30 - 12:00

### Overview of the Department of Local Government, Sport and Cultural Industries' new Strategic Plan 2024-2029



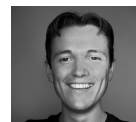
- Objectives and commitments for fostering a cohesive, prosperous, vibrant and healthy Western Australian community
- Delivering major arts, culture, sporting and recreation infrastructure projects

Lanie Chopping, Director General, Department of Local Government, Sport and Cultural Industries - WA

---

🕒 12:00 - 12:20

### Electricity, Steam Engines and Large Language Models - Why the tools trump the tech in the race for AI productivity



Darcy Myring, Prompt Engineer, AutogenAI

---

🕒 12:20 - 12:40

### Goldfields - Esperance Major Projects - Driving Investment in the Region



- Exploring major projects, economic growth, investments, development in the Goldfields-Esperance region

Rick Brooks, Regional Manager – Southern Perth, Goldfields and Esperance, AusIndustry Division, Department of Industry, Science and Resources

---

🕒 12:40 - 13:00

### Spatial WA: A Major Digital Project to accelerate land development approvals and streamline delivery of key infrastructure projects



- The Spatial WA digital platform will maximise the value of the State's data by creating a spatially accurate 4D virtual representation of the built and natural environment, supporting key Government priorities around infrastructure delivery, planning reforms and emergency preparedness

Darren Mottolini, Program Director, Spatial WA

---

🕒 13:00 - 14:00  
LUNCH BREAK

🕒 14:00 - 14:20

### The WA Resources Sector – Opportunities in the Pipeline



- Industry's contribution to WA
- Challenges facing the sector
- Infrastructure required to unleash the next wave of resources investment

Rebecca Tomkinson, CEO, The Chamber of Minerals and Energy of Western Australia

---

🕒 14:20 - 14:50

## PANEL DISCUSSION

### Accelerating Project Delivery with Disruptive Technologies

- Significance of AR/VR technology in the construction industry.
- The construction industry is being disrupted by technology. Designers, builders, and construction stakeholders are more global than ever in their collaboration requirements.
- Stakeholders that are adopting technologies are also reaping the benefits of better decision-making, mitigation of risks, costs, and time overruns.



The discussion focus:

- The use of innovative cloud tech (global and regional best practices).
- Streamlined collaboration with construction stakeholders.
- Better safety through AI.
- Achieving sustainable outcomes through digital tools.

Gerry Lockard, Digital Practice Leader, Western Australia & Northern Territory, Aurecon

Prof. Kate Brooks, Head of School, Elec Eng, Comp and Maths Science (EECMS), Curtin University, Perth

Sarah Hussein, Co-Founder, Industrial Metaverse

🕒 14:50 - 15:10

### Enhancing Major Projects with ARKANCE: Streamlining Collaboration and Efficiency through Autodesk Construction Cloud



ARKANCE, the world's largest Autodesk partner, empowers the infrastructure and built environment sectors with cutting-edge digital solutions. This presentation explores Autodesk Construction Cloud's role in streamlining workflows, enhancing collaboration, and driving efficiency through a Common Data Environment—ensuring seamless data integration, model coordination, and real-time collaboration across project phases.

Ben Byrnes, Technical Executive - AEC, ARKANCE ANZ

🕒 15:10 - 15:40  
AFTERNOON TEA

🕒 15:40 - 16:00

### EV policies for the EV consumer



The Australian Electric Vehicle Association was formed in 1973 to address the precarious nature of Australia's dependence on liquid fossil fuels for our transport networks. Over the decades the Association has continued to advance the case for full electrification of transport, and make representations to governments about how to accelerate this shift. At a pivotal moment in this transition, with a Federal Election looming, the AEVA has surveyed its members - the EV drivers, riders, commuters and enthusiasts, on what matters most to them, and developed five key policy areas which must be addressed by the next parliament. AEVA National President, Dr Chris Jones will cover the issues, and how good policy which focuses on the needs of the consumer and end-user, will drive the full electrification of transport in Australia.

Dr. Chris Jones, President, Australian Electric Vehicle Association, WA

🕒 16:00 - 16:30

### How NAIF can enable major projects in Western Australia

- An overview of NAIF
- An overview of projects NAIF is supporting in Western Australia
- The need for an innovative investment approach to infrastructure planning and execution



Craig Doyle, CEO, Northern Australia Infrastructure Facility (NAIF)

---

🕒 16:30 - 16:55

### Is the construction sector headed for a hard landing?

- The construction industry is facing a difficult period as costs and capacity constraints limit activity levels. With governments and households under pressure to reduce spending, how much further can construction activity grow?
- In this presentation Dr Nicholas Fearnley will take stock of the construction market and discuss the broader issues facing the industry including sustainability, capacity and capability, costs and funding.



Dr Nicholas Fearnley, Head of Global Construction, Oxford Economics

---

🕒 16:55 - 17:00  
MC CLOSSES

🕒 17:00 - 18:00  
NETWORKING & DRINKS FUNCTION

## Day 2 - THURSDAY 20TH MARCH

🕒 08:20 - 08:50  
REGISTRATION

🕒 08:50 - 09:00  
MC OPENS

🕒 09:00 - 09:30

### Speed Networking

Introduce yourself, swap business cards, and form new and lasting business connections during a series of one-on-one exchanges with fellow conference delegates.

---

🕒 09:30 - 09:50

### Major Projects across Southern WA

- Planning and delivery of port infrastructure across southern WA to build a future where trade drives economic growth and regional communities thrive.
- Overview of key capital projects and community infrastructure in the southern regions.

Keith Wilks, Chief Executive Officer, Southern Ports



🕒 09:50 - 10:10

### Affordable & Sustainable Infrastructure for Western Australia

Jason Kuchel, State Director SA/NT/WA & Director, Technical Policy, Cement Concrete and Aggregates Australia (CCAA)



🕒 10:10 - 10:30

### Connecting the Possibilities of the Pilbara with the World

- Spoilbank Marina
- Lumsden Point

Nick Dawe, Executive General Manager - Major Projects and Engineering, Pilbara Ports



🕒 10:30 - 11:00

### Harnessing AI for major project contracts and claims

- Enhancing efficiency and outcomes throughout the contract lifecycle

Peter Dombkins, Director, PwC Australia



🕒 11:00 - 11:30  
MORNING TEA

🕒 11:30 - 11:50

### Investing in Housing Initiatives

- This session will explore innovative options for social and affordable housing, discuss the capacity constraints within the residential construction sector and explore ways to boost housing supply and housing diversity around existing infrastructure and activity corridors.

Nicola Brischetto, Executive Director, WA Property Council of Australia



🕒 11:50 - 12:20

## PANEL DISCUSSION

### Positioning WA as a Global Clean Energy Powerhouse

- The Government of Western Australia has committed half a billion in funding to fast-track clean energy and major industrial projects in a bid to establish the state as a “global clean energy powerhouse.”
- The panel will delve into the impact of clean energy and how the WA government can fast-track key infrastructure projects.
- Unlocking world class wind resources as an important part of WA's energy transition

Raquel Carter, Head of WA and Environment, Energise Renewables

Sam Pearce, CEO, Collgar Renewables

Tim Bray, Assistant Coordinator, Strategic and Consumer Policy, Energy Policy WA, Department of Energy, Mines, Industry Regulations and Safety



🕒 12:20 - 12:40

### Mental Health and Wellbeing in the Construction Sector

- Unfortunately, two workers take their own lives every working day in the industry. With large workloads and long working hours on top of financial precarity in the cost-of-living crisis, stress at work can result in many construction workers struggling with their mental health.
- Not only this, but engineers and architects struggle with similar concerns – faced with pressure to work on 'impossible' projects, unhealthy work-life balances, and resource cuts that can result in mental health problems across careers.
- The session will focus on areas to improve and prevent mental health crises, including how managers can identify and support those in need.

Liam Cabbage, Chief Executive Officer, MATES in Construction, WA



🕒 12:40 - 13:00

### Major Projects at Shire of East Pilbara

- Overview of current major projects and future plans and priorities for the Shire of East Pilbara

Steven Harding, Chief Executive Officer, Shire of East Pilbara



🕒 13:00 - 14:00  
LUNCH BREAK

🕒 14:00 - 14:20

### Gascoyne Gateway: A Catalyst for Regional Resilience and Economic Growth



- A vision for sustainable infrastructure, economic growth, and national security.
- Enabling Regional Resilience through Sustainable Infrastructure
- The Economic Imperative for Regional Growth
- Strengthening Supply Chains and National Security
- Private Infrastructure & Defence Capability
- Future-Proofing WA with Strategic Investment

Daniel Jackson, Chief Executive Officer, Gascoyne Gateway Limited

---

🕒 14:20 - 14:40

### Women in Green Hydrogen



- Women in Green Hydrogen is a network of passionate women working in the green hydrogen sector. Their vision is to increase the visibility and amplify the voices of women working in green hydrogen.
- Learn about their impact to empower change in the industry.

Leanne Halliday, Territory Manager, Oceania and Hydrogen SME, LRQA

---

🕒 14:40 - 15:00

### Here to help! Portable Long Service Leave for WA Construction Workers

Overview of MyLeave: Introduction to the Construction Industry Long Service Leave Scheme and its benefits for both workers and employers in Western Australia.

- Worker and Employer Benefits: How MyLeave ensures financial security for workers through long service leave, and the positive impact it has on workforce retention and employer stability.
- Contribution and Entitlement System: Explanation of the employer contribution process, how workers accrue leave, and how payments are calculated.
- Future Directions: Discussing potential improvements, digital advancements, and expanding the scope of MyLeave for greater industry engagement.

Alida Burness, General Manager - Operations and Communications, MyLeave Construction Long Service WA

---

🕒 15:00 - 15:05  
MC CLOSSES

Agenda is subject to change  
\*Speakers to be confirmed



An Event by:



Contact:

**Expotrade Australia Pty Ltd**  
Suite 24, Building 4, 195 Wellington Road  
Clayton VIC 3168 Australia  
Tel: +613-95450360  
Email: [info@eteglobal.com](mailto:info@eteglobal.com)